

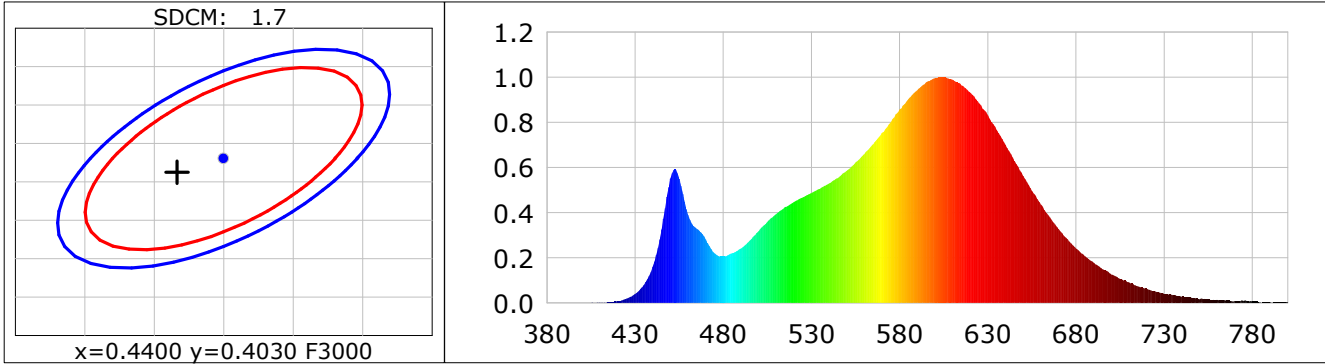
Lightsource Test Report

Product Infomation

Product Category: LED STRIP	Product Type: LED STRIP
Product Spec: BILY 7	Product Number: 305
Manufacturer: TECSOLELED S.L.	Buyer: TECSOLELED S.L.

CIE Colorimetric Parameters

Chromaticity coordinates: $x=0.4367$ $y=0.4012$ $u(u')=0.2516$ $v=0.3468$ $v'=0.5202$
 CCT: $T_c=2982K$ ($duv=-0.00110$) Color Ratio: $R=0.232$ $G=0.740$ $B=0.027$
 Peak Wavelength: 602.9nm Half Bandwidth: 121.7nm
 Dominant Wavelength: 583.3nm Color Purity: 0.515
 CRI: $R_a=82.8$, $avgR(1\sim14)=77.7$, $avgR(1\sim15)=77.5$ TM30: $R_f=84$, $R_g=95$
 GAI: $GAI_BB_8=95.4$, $GAI_BB_15=103.4$, $GAI_EES=54.3$
 R1 =82 R2 =92 R3 =95 R4 =81 R5 =83 R6 =92 R7 =80 R8 =58
 R9 =7 R10=83 R11=80 R12=73 R13=85 R14=98 R15=74
 Color Quality Scale: $Q_a=82.6$, $Q_f=84.2$, $Q_p=83.9$, $Q_g=91.2$
 Q1 =78 Q2 =94 Q3 =84 Q4 =80 Q5 =83 Q6 =84 Q7 =84 Q8 =86
 Q9 =95 Q10=91 Q11=87 Q12=84 Q13=82 Q14=72 Q15=74



Photometric Parameters

Luminous Flux: 1086.4 lm	Efficiency: 125.19 lm/W	Radiant Power: 3.266 W
Total mains efficacy: 115.93 lm/W	Energy Efficiency Class: E (EU 2019/2015)	

Electric Parameters

Voltage: 24.000V	Current: 0.3616A	Power: 8.68W
Power Factor: 1.0000	Frequency: 0.00Hz	

Test Infomation

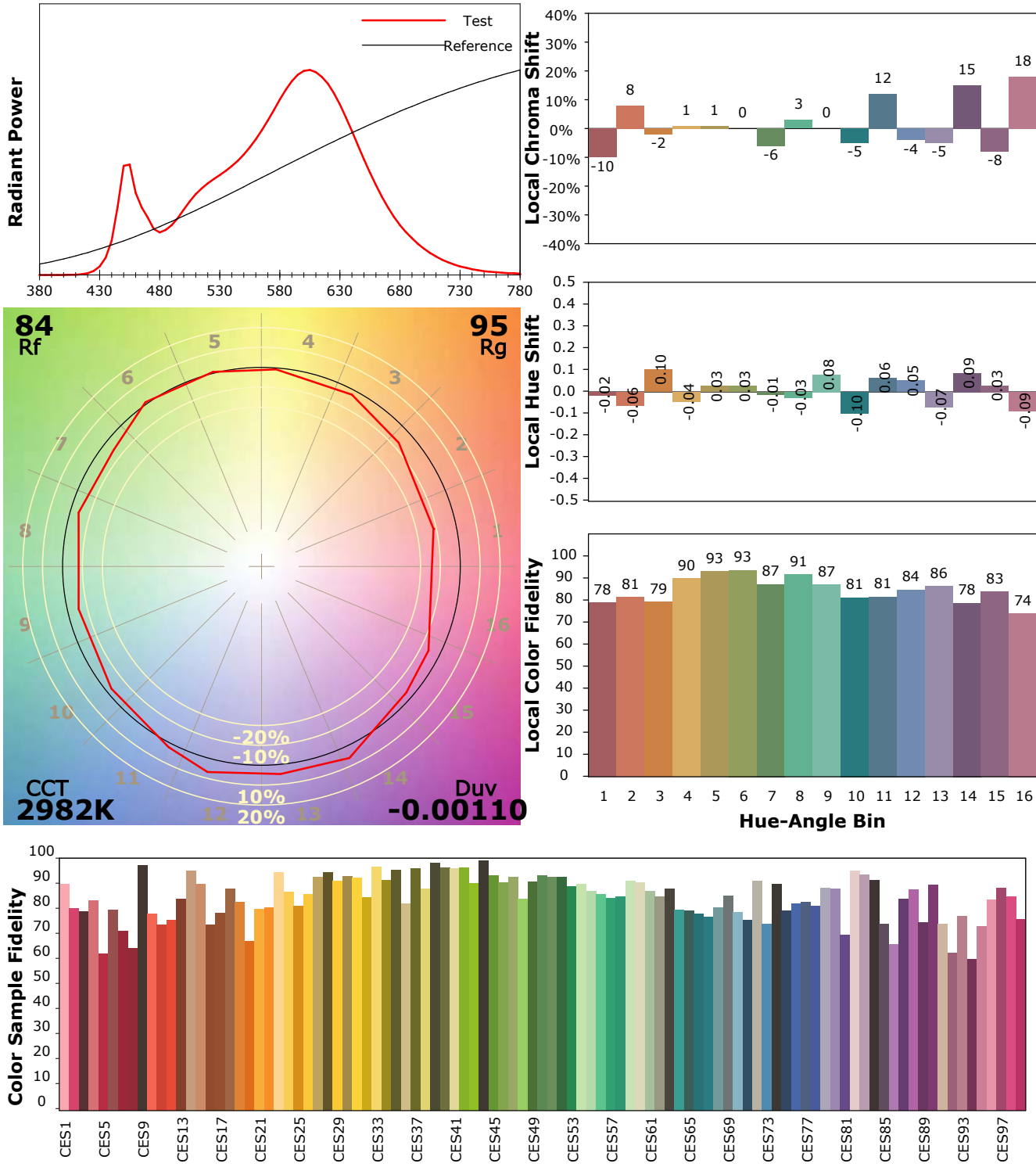
Scan Range: 380~800:1nm	Photometric Method: sphere-spectroradiometer
Stabilization Time: 0 Sec ALC.: 1.0000	Photometric Condition: Sphere diameter: 1.50m, 4PI
Max of Signal: 46194 (2223)	CCD Integration Time: 662.93 ms

IES TM-30-18 Color Rendition Report

Product Information

Product Category: LED STRIP
 Product Spec: 21059602440567
 Manufacturer: TECSOLELED S.L.

Product Type: LED STRIP
 Product Number: 305
 Buyer: TECSOLELED S.L.



Condition: Tx:19.5°C, Ti:18.4°C, R.H.:60%
 Test Lab: TECSOLELED S.L.
 Operator: JORDAN GIL DIAZ

Test Device: Inventfine CMS-2S (Plus)
 Test Time: 2021-11-02 10:17:32
 Inspector: